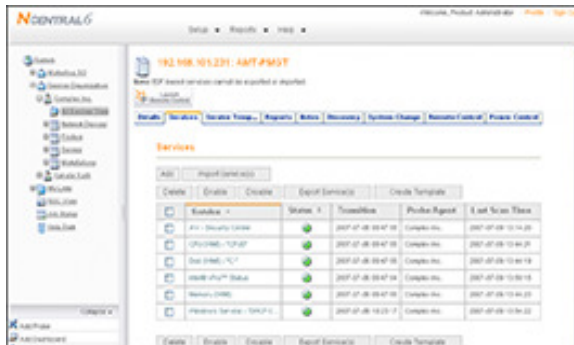




Powered by our IT Experience

Like all businesses, you depend on your network. Have you ever needed to send an important email or access vital information, but the system or data was inaccessible? Your technology needs to be as flexible as your business, so we developed our À la carte IT support program. The À la carte program allows you to customize your support and service needs directly related to your critical business services, all at a cost effective price.



"Constructure Technologies' flexible support options let me tailor a solution that met my businesses needs, and helped me get more out of my technology."

Our À la carte offering allows you to select individual services that meet specific needs within your business. Simply work with us to determine what services make sense for you, and we'll ensure that you have a solution tailored to your needs. You know your business better than anyone, so we put the decision and purchasing power in your hands!

Our enterprise-class IT support and monitoring capabilities empower us to dramatically reduce the time it takes to diagnose and resolve network problems or failures. This translates into increased employee productivity and cost savings for you. In some cases, problems can be avoided before they even happen.

Do these issues plague your business?

- **Wasted time?** Do your staff productivity levels drop dramatically during IT outages, interruptions or failures?
- **Security fear?** Worried that vulnerable servers, laptops or PCs may be putting your organization at potentially devastating risk?
- **Network neglected?** Is yours perceived as a "necessary evil" and not as integral to improving business performance?

Program Advantages:

- **Safe and protected computing environment:** We can ensure patches and antivirus updates for your PCs have been installed, reducing the likelihood of your network being compromised by a virus, worm or other attack.
- **Lets you focus on your business:** We can be your networking watchdog, enabling you to focus on your core business activities instead of managing a network or its problems.
- **Fewer emergency calls and network issues:** With our services, you'll see a dramatic reduction in the number of emergency and network incidents that can impact your business operations.



Program Features:

- **24x7 Performance Monitoring** ensures all of the critical devices that comprise your small business network are healthy and functioning reliably and optimally.
- **Monitoring of Your Backup Solution** ensures the backup of your important corporate data occurs as scheduled and without error, protecting your organization from data damage or loss.
- **Patch Management** ensures all of your Windows servers and PCs have the most up-to-date security and system patches, helping to optimize performance and minimize security risk.
- **Comprehensive Reporting** provides information on a wide variety of areas. Whether it's for troubleshooting or long-term planning, on-demand or scheduled, we have the reports you need.
- **Anti-virus Management** ensures the proper operation and updating of your anti-virus software on all PCs. We make sure your anti-virus software is doing its job and respond to alerts.
- **License Compliance** tracks how many licenses of your legally purchased software are running on your network so that avoid fines set out in your license agreements you.

À la carte Options	Description
Endpoint Security	Total security solution including Anti-Virus, Anti-Malware, Hosted Intrusion Protection, and more!
Performance Monitoring	In-depth health performance monitoring of all elements of your business' IT assets
Performance Reporting	Monthly / quarterly CIO meetings to review customized reports, overall network health, and strategic IT planning
Device Maintenance	Automated maintenance and self-healing solutions applied to critical servers & workstations
Patch Management	Monitoring and management of patch levels; ensuring desktops and servers are kept up to date. Patch level management reports provided on a regular basis.
Application Monitoring	Monitoring business critical applications like Exchange, Outlook web access, SQL Database, and Terminal Services.
License Compliance	Provides information on compliance with application licensing requirements.
Backup Monitoring	Monitoring the success or failure of data backup.
Printer Monitoring	Monitoring customers' printers to keep track of page count and toner levels.

www.constructuretech.com
 INFO@Constructuretech.com
 631.396.7777

Call Today for a Custom Quote

631-396-7777